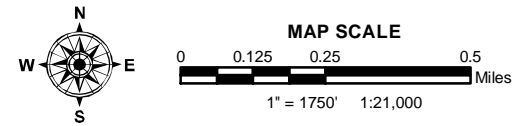


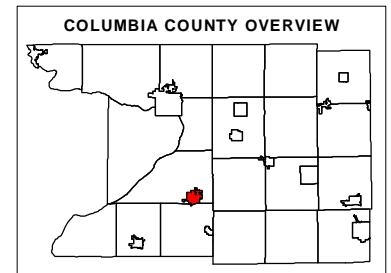
GENERAL TRANSPORTATION MAP
FOR THE
VILLAGE OF POYNETTE
COLUMBIA COUNTY, WISCONSIN



KEY TO FEATURES

Pavement Centerlines	
	Interstate Highway
	US Highway
	State Highway
	County Highway
	Town Road
	Minor Urban Road
	Private Road

Transportation Features		Other Features	
	Airport		Hydrography
	Amtrak Station		Municipality Boundaries
	Hospital		Section Lines
	Modern Wayside		Neighboring Municipality/County
	Rustic Wayside		
	Railroad		



Sources: Airport locations and runways, pavement centerlines and hydrology derived from April 1995 flight taken from 10,000 feet, 1:24,000 scale Public Land Survey System. Other sources of centerline data are from a vehicle mounted Global Positioning System (GPS) used by the Land Information Department. Centerline data and road names are updated in the Land Information Department from other documents of public record including but not limited to the Tax Roll, certified surveys, plats of survey, and data from the Wisconsin Department of Transportation ("gas tax maps"). Wayside locations taken from the 1995 orthophotography with other information coming from the Planning and Zoning Department. Hospital locations taken from Midwest Directories, Inc. 2000 - 2001 Telephone Directory with points taken from the 1995 orthophotography. For information about ordering the Columbia County Transportation Map, visit the Columbia County Website at "www.co.columbia.wi.us", call the Land Information Department at 608.742.9616, or e-mail at land.information@co.columbia.wi.us.

DISCLAIMER: All information contained herein is ADVISORY ONLY. Map accuracy is limited to the quality of data obtained from other Public Records. Some roads on this map are platted but may not yet be constructed. This map is NOT intended to be a substitute for an actual field survey. The user is responsible for verification of all data. Columbia County is NOT responsible for the improper use of the data contained herein. Created by the Columbia County Land Information Department, JPB. January 6, 2003.

